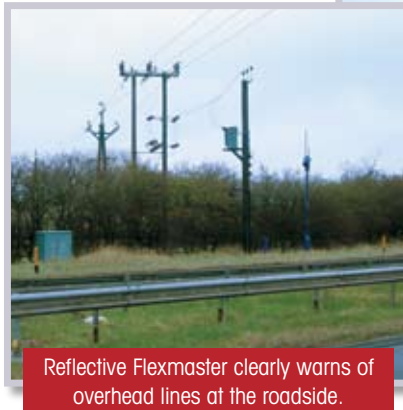


Improving Workforce Safety with **A-ONE INTEGRATED HIGHWAY SERVICES** working in conjunction with **HIGHWAYS AGENCY**

Problem Identified

A-ONE INTEGRATED HIGHWAY SERVICES are the Managing Agent Contractor for the Highways Agency Area 14, which operates in the North-East of England on the trunk road network. A-One have been appointed to carry out road maintenance since July 2003.

Due to the need to reduce congestion on the network, the contractors operate during night-time hours. They use large pieces of machinery, such as HIAB's, access platforms and excavators. They may be working in the vicinity of poorly visible, overhead cables, leading to an increased risk of danger to the workforce. A-One required a highly visible warning sign so that the workers were able to establish where the overhead cables were situated.



Reflective Flexmaster clearly warns of overhead lines at the roadside.

Solution

As an existing customer, A-One were aware of the extensive range of Glasdon products and contacted the company to request a visit by a specially trained representative. A-One discussed with the representative various artwork options for a warning sign. Subsequently, the Glasdon Flexmaster® Marker Post with high intensity warning signs was chosen to be sited on the road networks and this was approved by the Highways Agency.

Flexmaster Hazard Marker Post is manufactured from highly durable Ultraflex™ material, which can withstand many vehicular impacts. Its flexible "knock-down, spring-back" property makes it ideal for high-risk locations. Flexmaster is cost-effective, with virtually no maintenance necessary. The reflectors are impact-resistant and give excellent day-time and night-time visibility. Reflectors are still effective when partially covered by mud and are not easily obscured by long grass. Flexmaster is easy to install with a below-ground socket fixing and is safely and securely fitted into the ground.

Resulting Benefits

The Flexmaster marker posts have proven to be a successful warning sign for the workforce. The posts are located on the Area 14 network and demonstrate the actual position of the cables, to make it clear at night where it is safe to work from. Since the posts were sited, they have improved safety and been of great benefit in highlighting the location of dangerous cables.



What the customer says:

“The provision of the Glasdon Flexmaster marker posts has significantly reduced the risk posed to the workforce, by giving a clear warning of the actual location of overhead cables on the Area 14 network.”

Phill Beaumont,
 Assistant Network Manager at A-One Integrated Highway Services.



Glasdon U.K. Limited
 Local Government
 Highways and Safety Division

Preston New Road
 BLACKPOOL
 Lancashire
 FY4 4UL

Tel: (01253) 600411
 Fax: (01253) 792558
 e-mail: hs@glasdon-uk.co.uk
 web: www.glasdon.com



We are grateful to A-ONE INTEGRATED HIGHWAY SERVICES and HIGHWAYS AGENCY for the kind help given in the production of this case study.

 **Glasdon.** Flexmaster and Ultraflex are trademarks or registered trademarks of GLASDON GROUP or its subsidiaries in the UK and other countries.

Glasdon Group Limited Is An Equal Opportunities Employer.

© Glasdon UK Ltd. 08/2007 Glasdon reserve the right to alter price and specification without prior notice. LP/MP5



80% recycled
 This leaflet is printed
 on 80% recycled paper



GN375/02